

# colourful EMBROIDERED CUFF

## You will need:

- 1 x 30mm x 40mm Cabochon
- 1 x 1 1/2 x 6 inch Brass Cuff
- 1 x 6 1/2 inch x 1 5/8 inch cork fabric. Medium Blue Green
- 1 x 8 inch X 8 inch piece of Ultra Suede Black or your choice Ultra-suede ST (Soft)
- 2 x 7mm Glass Stone Smoky Montana Sapphire
- 2 x Embroidered Flowers. Search on Etsy embroidery flower patch
- 3g colour A. Size 15 Seed Beads metallic Gold
- 1g colour B. Size 15 Seed Beads your choice used around the 7mm stone and centre of size 8 beads. I used Olive/Gold Lined AB 15-726
- 1g Size 11 Seed beads colour A. Picasso light blue
- 1g Size 11 Seed bead colour B. Picasso Chartreuse
- 1g Delica Metallic Gold DB-0022
- 20 x Size 11 Delica Beads Galvanised Dark Fuchsia DB-0463
- 3g Czech Size 9 Seed Beads Cut Gold Iris
- 14 - 16 x Size 8 Seed Bead. Green Teal Matte Metallic 8-F463B
- Beading needle size 12
- Beading thread, I use Nymo size B, your choice
- Super Thick Tacky Glue
- E6000 or two part 5 Min epoxy glue
- Scissors
- Tooth picks for spreading glue
- Ruler
- Gel pen or fine tiled marker non permanent
- Lighter for sealing flower edges



*Mix up cork and embroidery to make this fabulous cuff*

DESIGNED BY HEIDI KUMMLI

\*\*\*\*

**O**n the cover!! When this stunning piece hit my inbox, I may have done a little happy dance. I adore bead embroidery, and equally, I adore all of Heidi's work so this piece couldn't have been more perfect. The cabochons, embroidered flowers and seed beads all work so well together to create this delightful cuff. Heidi has pointed out through the pattern that colour choice and even some of the design can be a personal thing but has given us the colours she used and all the hints and tips we need to work our way through. There are many different colours of the embroidered flowers and equally many cabochons, and this piece would look amazing in many different combinations. If you decide a cuff isn't for you, you could work it into a pendant. Alternatively, you could make a matching pendant to go with your cuff and even use some of the small cabochons for earrings. The cuff will roughly take six hours to make and costs around £30 depending on what you have already in your stash.

## Getting started with the cabochon.

**1**  
Cut a piece of ultra suede to 3 1/2 inches x 2 inches. Using a gel pen, make one centred horizontal and one vertical line.



**2**  
Use an E6000 or a two-part epoxy glue your cabochon in the centre. Use your lines as a reference.

**3**  
Working in backstitch, stitch a row of the size 9 beads around the cab. For the backstitch, thread a size 12 beading needle with 3ft, length of thread and





knot one end. Sew up through the foundation next to the stone. Pick up four size 9 cut beads, and lay them down next to the stone. Now push your needle down through the suede where the fourth bead rests, pulling all the beads down tight to the suede and cab. With your needle, go back up between the second and third bead and push your needle and thread through the last two beads, now you can add another four beads and repeat the process. After you have gone around your cabochon, and get to where you started, you may need to adjust the number of remaining beads, so they fit. Make sure to go back through the whole row of beads, this pulls the row of beads nicely together and straightens it.



**4** Backstitch a second row of Delica size 11 beads around the size 9 beads.

**Bezelling the cabochon**



**5** Bring your needle up and out of a size 9 bead. Add five size 15 beads, jump over two of the size 9 beads, and into the next size 9 bead. Add another five size 15 beads. Repeat all around the cab.





**BEAD NERD**

A lazy way of making something look fabulous. People love the embroidery, but I hate to tell them I didn't do the fabric embroidery.

**TOP TIPS**

**SIZE IT** When cutting the ultra suede backing, it is best to cut the sides close to the size you need before gluing to your cuff, because once it is glued on the cuff it is hard to trim cleanly.

**PLACE THEM** Play with the placement of the embroidered flowers first before gluing. You may find a certain direction looks better than another.

**CABOCHON CHOICE** When picking out a centre cabochon design, keep in mind that the bezel will cover some of the design.



**6** When you get back to where you started (and if you only have one size 9 bead to jump) add just three size 15 beads instead of five. Keep your beads snug.

**7** Now that you have completed going around your cabochon with the size 15 beads; push your needle through a size 9 and out three size 15 beads.



**8** Pick up two size 15 beads, one Delica in colour B and one size 15 as your stop bead. Push the needle back down through the Delica and add two more size 15 beads. Pull the beads down and snug up to the row of size 9's. Push your needle into the third size 15 in the next loop. Repeat this pattern around the bezel.



**9** Once you get back to where you started from, pull the beads snug. Bring your needle out of the third size 15 in the first loop and out the two size 15 beads, but not the Delica. Push the needle down and out the third size 15 bead next to it. Pick up a size 11 bead colour A, and push your needle into the second and third size 15 in the next loop, below the delica. Continue this pattern around the bezels.



**10** Pull the beads snug around the cabochon and then push your needle down a row of beads and out the back of the suede. Knot and cut your thread.

**Adding small stones**



**11** Using E6000 or two-part epoxy, glue the two size 7mm glass stones on either side of your bezelled cab; making sure they are snug against the Delica beads and centred on your line.



**12**

Once the glue has dried, start the row by bringing the needle up in the corner where the stone meets the Delicas. Backstitch a row of size 15 beads in colour B around the glass stone.

**13**

When you get to the other side, add 6 - 8 size 15 beads in colour B and then jump over the section where the Delica beads and the stone meet. Push the needle into the row of size 15 beads on the other side. Pass the needle through the whole row of beads to reinforce. These extra beads will help cover any space that might appear once the beadwork is placed on the curved cuff.



**14**

Trim the excess suede from around your beaded cabochon. Make sure to trim close around the small stones, too much excess suede will show up once it is glued to the flower.

**Adding the embroidered flowers**

**15**

Trim your flowers from the embroidered piece you have chosen. Choose two flowers that are consistent in size. You don't want them to be so large that they are bigger than the metal cuff or cork fabric. If you find a flower with a leaf attached, you can leave the leaf attached to it. You can also cut a leaf separate and glue it under the flower once you are ready.



**16**

Cut the embroidered flower carefully - it is better to have excess embroidery on the flower rather than cutting into the flower you've chosen. Trim the excess carefully. I have found you can use a lighter and burn off excess threads etc. It can seal the flower, so they don't unravel. But test this first as this may not work on all embroidered pieces.



**17**

Apply a small amount of tacky glue

behind the embroidered glass stone and cabochon. Glue the flower in place, the small stone should rest in the middle of the flower so as to look like the centre. Make sure the flower is positioned as you want it, and centred. Repeat on other side.

**18**

Cut a piece of cork fabric to measure 6 1/2 inches x 1 5/8 inches. Using a gel pen or non-permanent marker, make vertical and horizontal centre lines for the placement of the bezelled stone and flowers.



Once your flowers are (temporarily) glued to the beadwork, use tacky glue and spread the glue onto the back of the flowers and beadwork. Glue this to the centre of your cork fabric. Allow the glue to dry.

**COLOURWISE**

- I like to use bead colours that will compliment the centre cabochon. You can change the small 7mm stone, maybe
- use a natural stone you already have in your stash or a different size.





DESIGN NOTE

There are lots of different embroidered flower patches you can find online, search them out. The colours are amazing, and I use them for all kinds of applications, necklaces, collars etc. I find the brighter, the better but this is a personal choice. Also, find something that will compliment your stone selection. Natural stones work just as well at the cabochons with pictures. It's a great way to use items you already have in your stash.



**Backstitching around the flowers**

**19**

Once the glue has dried, tack or sew down your flowers and beadwork along the edge to your cork fabric. Find the thread that blends in with the colour of your flowers so it won't show.



**20**

Use one size 8 bead and one size 15 bead colour B as a stop bead. Tack down 6 - 7 size 8 beads around the glass stone to look like stamen.



**21**

Backstitch a row of size 15 beads colour A, outlining the flower petals and the leaves. Stitch over the leaves to help define them. You can backstitch around the leaves using a size 9 bead instead of a size 15 bead as this helps to bring some depth to your work, but this is your choice.



**22**

Backstitch a row or two of size 11 beads in colours A and B around the first petals on either side. This helps to pull the cabochon beadwork and the flowers together. It also fills in the centre of your bracelet and covers the cork.

**Attaching cork to cuff**

**23**

Cut out a piece of ultra-suede backing 6 1/2 inches long and 1 5/8 inches wide. Leave the centre a tad bit larger to compensate for the centre stone.

**24**

Spread Tacky glue onto the outside of your metal cuff. Lay the cuff onto the backside of the beaded cork fabric and roll the cork onto the cuff. Pull the beaded cork fabric tight and centre on the cuff. Cut off the excess cork along the ends, leaving a 2 - 3 mm to edge. Use some sewing pins to help anchor the cork to the cuff if needed.



**25**

Spread tacky glue onto the backside of the ultra-suede, press this into the inside of the cuff. Centre the ultra-suede and cut any excess suede.

**Add the simple edging**

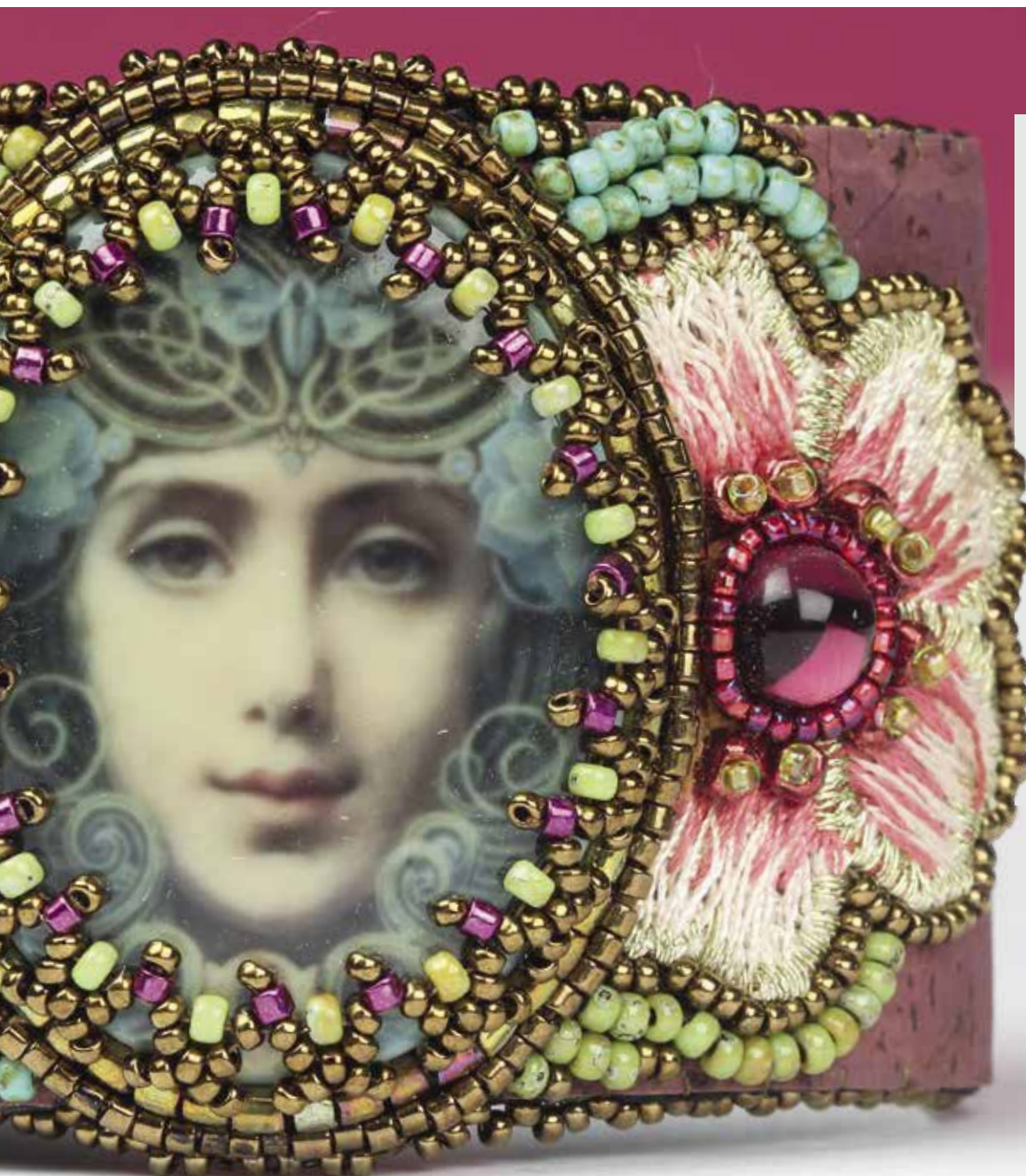
**26**

After you have trimmed all the excess suede foundation, you can start the simple edging.

**27**

I like to start the edging in the corner where the bezel meets the cork.





## Inspiration

I found using vintage embroidery pieces in my bead embroidery was very delightful. I then discovered that you can use new embroidery patches too and they are a lot less expensive. The colours are fabulous, and I think they work well with the cork fabric, which also comes in some yummy colours. The nice thing about the cork fabric for a foundation is that you don't have to cover the whole thing with beads. For me, the inspiration was all about colour, from the centre cabochon to the embroidery patches, to the cork. After a year like 2020, we needed to add some bright empowering colour back into our lives.



**28**  
Thread a size 12 beading needle with 3ft length of thread and knot one end. Now we'll start sewing between the foundation and the backing. Bring your needle

up through the top of the cork foundation about 1/16" from the edge (this will hide the knot), add four size 15 beads colour A and pull them down next to the cork. Sew back up through the cork and suede about 1/8" down from where you started and go back through the bottom of the fourth or last bead. Pulling your thread snug, pick up three more beads and again push your needle about 1/8" over from where you started. Sew back up through the bottom of the third or last bead and pull the beads snug. Repeat this process all along the edge. Once you reach the starting point, add the required amount of beads needed and go back

down through the top of the first bead you strung and the backing. Tie a knot and push your needle back into the backing about 1/2 inch and then back out. Cut the thread.

### SUPPLYSHOP ✓

★ WhereGypsiesRoam,  
[www.etsy.com/shop/WhereGypsiesroom](http://www.etsy.com/shop/WhereGypsiesroom)  
.....

**BEADLINK:** [www.heidikummlidesigns.com](http://www.heidikummlidesigns.com)