



Deer Medicine
Wall Hanging
By
Heidi Kumpli

Deer medicine is something we all experience. When we see deer it fills us with grace, tenderness, love, gratitude, and so much more. This peaceful being gives so much to all of life. When I see deer I remember my mother whom cherished them. In this project we will be using a deer jawbone, and soft deer hide fringe.

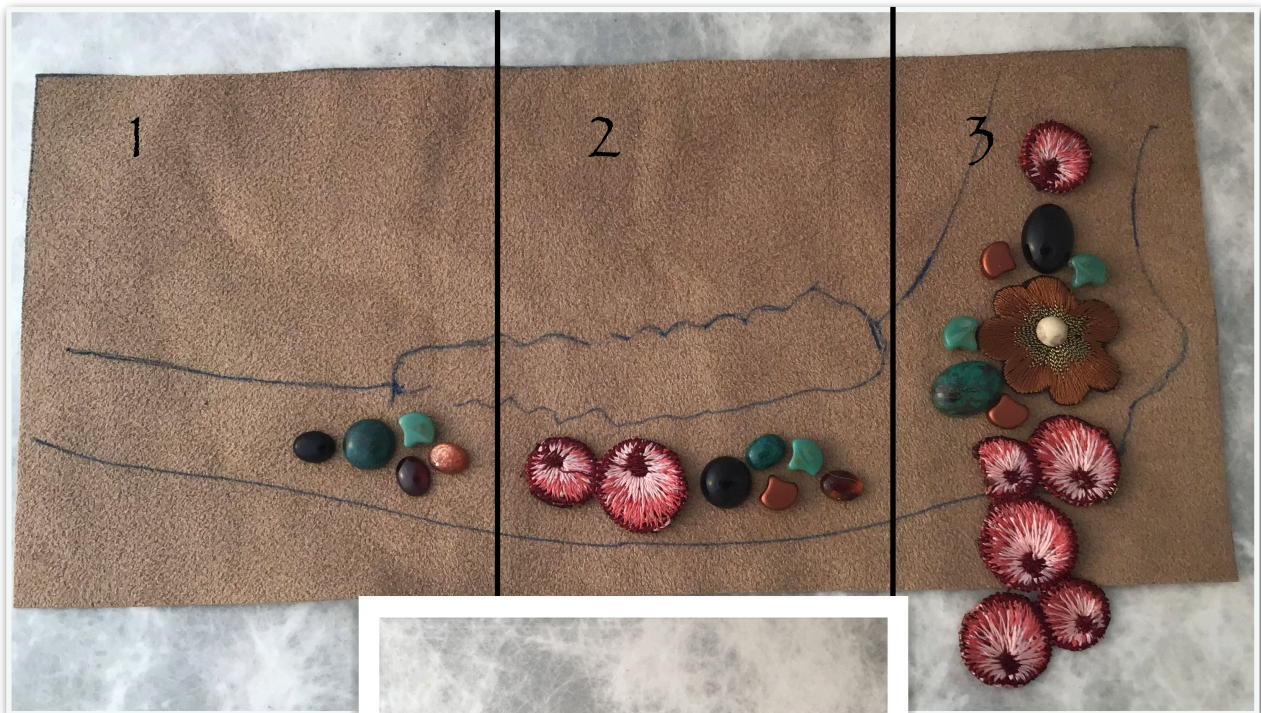
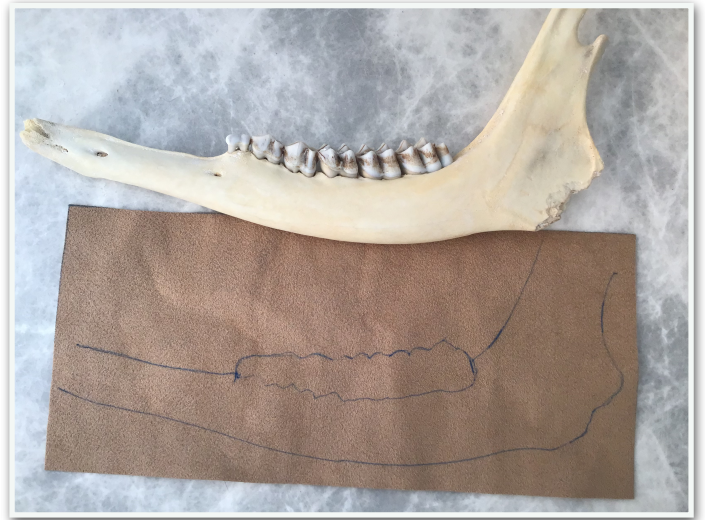
Various natural stones, and beautiful embroidered flowers will adorn your piece.



If you want your trim twisted I recommend doing that first see page 7 to learn more.

Getting Started

- Determine which side of the deer jaw bone you want to use. You can clean it up with a bit of sandpaper. Not every jawbone will be perfect but than nothing is.
- Trace around the bone onto the ultra suede using a gel pen or marker. Also mark where the teeth are. Keep in mind your beadwork will need to remain in the lines.
- Lay your components in place on the suede you can play with your stones, Ginko beads and flowers colors at this time. Make sure the components stay within the guide lines. These will be grouped and cut into three sections.



It's important to note that if the jawbone lays in the opposite direction from these photos your components layout will also lay in the opposite direction.



Use your phone to photograph your layout this way you won't forget the perfect design.

Section 1

1. Using E6000 or two part epoxy ,glue one of your 10mm stones in place centered between the lines. Backstitch a row of size 15 metallic beads around the stone. (For backstitch instructions see page 10).
2. Glue two size 6X8mm stones on either side the 10mm stone.
3. Backstitch a row of size 15 beads around the two 6X8 mm stones.
4. Backstitch a row of size 9 beads below the 10mm stone and between the two 6X8 mm stones. Glue a Ginko bead next to the 10mm and second 6X8 mm stones.
5. Stitch the Ginko bead in place and backstitch a row of size 11 beads color your choice around the Ginko bead.
6. Backstitch a row of size 9 beads between the 6X8 mm stone and Ginko bead.
7. Glue a third 6X8 mm stone next to the Ginko bead and 6X8mm stone.
8. Backstitch a row of size 15 beads around the last 6X8mm stone and trim.
9. Section one is now complete.



Section 2

1. Using Tacky Glue, glue the embroidered flower buds in place on the suede. This placement might change depending on the direction of your jawbone. Tack around the buds edge to the suede, and backstitch a row of size 15 beads around them.
2. Using E6000 or two part Epoxy glue your second 10mm stone in place next to the bud and size 15 beads.
3. Backstitch a row of size 15 beads around the 10mm stone. Glue one 6X8mm stones next to the 10mm stone. Backstitch a row of size 15 beads around the 6X8mm stone.
4. Backstitch a row of size 9 beads on top of the 10mm stone between the bud and size 6X8mm stone. Glue a second color of the Ginko bead below the 6X8mm and the 10mm stone.
5. Stitch the Ginko bead in place and backstitch a row of size 11 beads color your choice around the Ginko bead. Backstitch a row of size 9mm beads below the 10mm stone between the bud and Ginko bead.
6. Glue a second Ginko bead between the 6X8mm stone and the first Ginko bead.
7. Stitch the Ginko bead in place and backstitch a row of size 11 beads color your choice around the Ginko bead.
8. Glue the second 6X8mm stone in place next to the Ginko bead
9. Backstitch a row of size 15 beads around the 6X8mm stone and trim.
10. Section two is now complete.



Section 3

1. Using Tacky Glue, glue the large flower in place. Using E6000 or Two Part Epoxy glue the small 6mm cab in the center of the flower.
2. Tack the flower around the edges to the suede. Backstitch a row of size 15 beads around the flower. Backstitch a row of colored size 15 beads around the 6mm stone.
3. Glue the two 10X14mm stones in place. Stitch a row of size 15 beads around the to 10X14mm stones.
4. Glue the four remaining Ginko beads in place on either side of the 10X14mm stones.
5. Stitch the Ginko beads in place and backstitch size 11 beads two colors your choice around the Ginko bead.
6. Backstitch size 9 beads around the 10X14mm stones and around the remaining exposed flower edge.
7. At this point you can lay the flowing flower buds at the bottom to see how and where they will hang best. Trim along the top for better placement and using Tacky glue, glue the top two buds in place with suede behind.
8. Tack the buds in place and backstitch a row of 15 beads around the edges where desired.
9. Trim the rest of your piece, trimming behind the stitched flowers. Section three is now complete.



Use Tacky Glue to glue your pieces in place. You can move them around to find the arrangement you like best.



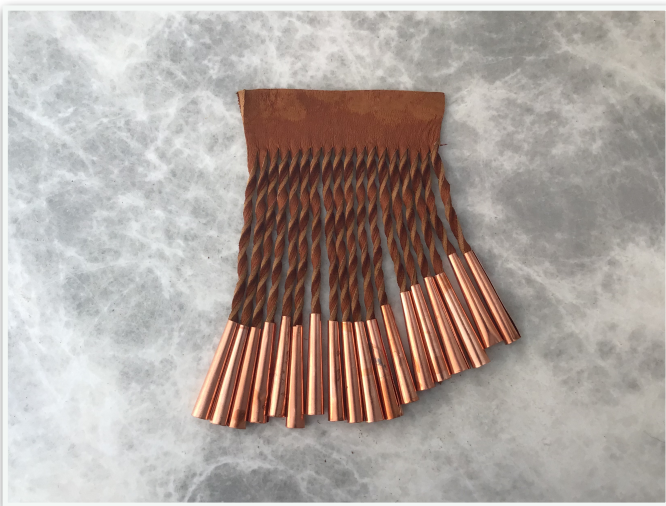
Painting

- Painting the teeth is totally optional.
- I used an acrylic metallic paint easy enough to find at your local craft store.
- Use a small brush being careful to not paint the bone, wash off with water if you do or sandpaper once dry.
- Give it a couple coats as these teeth can be a bit dirty, allow the paint to dry between coats.



Fringe

1. The fringe in your kit is ready to go but if you want to twist it you will need to get it wet and allow it to dry.
2. If you don't want to twist go to step 7
3. To twist your fringe get it wet by running it under water till it is saturated then wring it out. Pull and stretch the fringe straight.
4. Using masking tape, tape the top part to the edge of your desk.
5. Start twisting your fringe and pulling as you go. The twist will remain when you let go. Twist all the strands in the same direction.
6. Once you are done twisting tape it in a sunny window and allow to dry, this could take several hours depending on how sunny and warm it is.
7. Lay your fringe behind the jawbone and figure out if you want to keep it long and straight or at an angle. A ruler helps with this
8. Once you have your angle if any use a gel pen or marker and mark where you want your cones to start. Note the longer the strand the easier to tie the knot.
9. String your metal cones in place. You might find it easier to trim the ends of the fringe at an angle so they fit in the cones better.
10. Pull the cone up to the top and knot where your mark is as best as you can. This isn't easy and won't be perfect. Your knot will need to be tight so that the cone can pull down over it and cover it. Trim excess fringe below knot. Re twist fringe as needed.



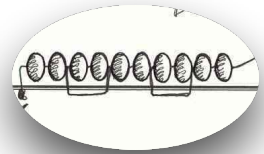
Finishing Your Piece

1. Adding a small piece of fur can really add some depth to your piece and also cover any flaws in the bone.
2. Pick a small piece of fur and play around with where you might want it to rest. It will be attached on the back.
3. Cut a small piece of left over suede and cut it to cover the back of the fur.
4. It is hard to apply glue on the front of fur so you will be attaching only from behind. Cut the suede so that it covers the back of the fur and also allows enough suede to attach to the jawbone. Add the Tacky glue to the suede, then lay it on the back of the fur and then to the back of your piece.
5. Use Tacky Glue to attach the fur and the fringe dangle.
6. Attach the chain using two jump rings. There are two predrilled holes one in the front of the teeth on the jawbone, and another towards the upper back above the large flower.
7. I hope the medicine of deer brings you much peace, beauty and gratitude.





Backstitch: Thread a beading needle with 2-ft, length of thread and knot one end. Sew up through the foundation next to a stone or wherever you want to start. Pick up four beads and pull them down to the suede laying them in the direction you want them to go, this could be next to a stone, following a straight line, wherever your path leads you. Now push your needle down through the suede next to where the fourth bead rests pulling all the thread and beads down tight to the suede. With your needle go back up between the second and third bead and push your needle and thread through the last two beads, now you can add another four beads and repeat the process as far as you need to go. After you have gone around your cabochon or finished your row make sure and go back through the whole row of beads, this pulls the row of beads nicely together and straightens it as well.



Supplies included in Kit:

- 1 ultra suede 9x4 inches
- 1 embroidered flower
- 3 embroidered small bud
- 1 embroidered hanging bud
- 1 6mm stone cabochon
- 2 10mm stone cabochon
- 5 8x6mm stone cabochon
- 2 10x14 stone cabochon
- 4 Ginko beads color 1
- 3 Ginko beads color 2
- 18 metal cones
- 1 12 inch chain
- 2 jump rings
- 2 grams size 15 beads metallic gold
- 1.2 grams size 11 two colors
- 1.5 grams size 9 cut beads gold iris
- 1 fringe
- 1 fur scrape

Tools needed not in kit:

- Beading needle size 12
- Beading thread your choice
- Gel pen or fine tip marker
- Scissors and small pliers
- Super Thick Tacky glue
- E6000 or two part epoxy glue
- Toothpicks
- ruler, lighter,



Copyright © 2026 by Heidi F. Kumpli

All rights reserved. My kits are designed for your personnel growth and use. Please don't sell, teach without written permission of the author.